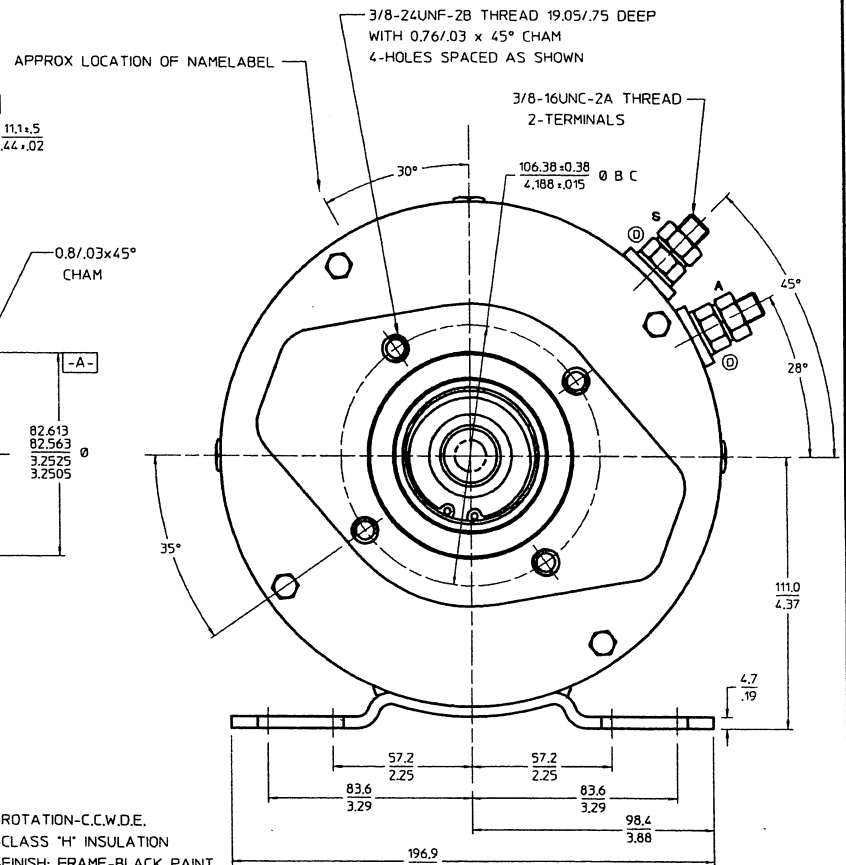
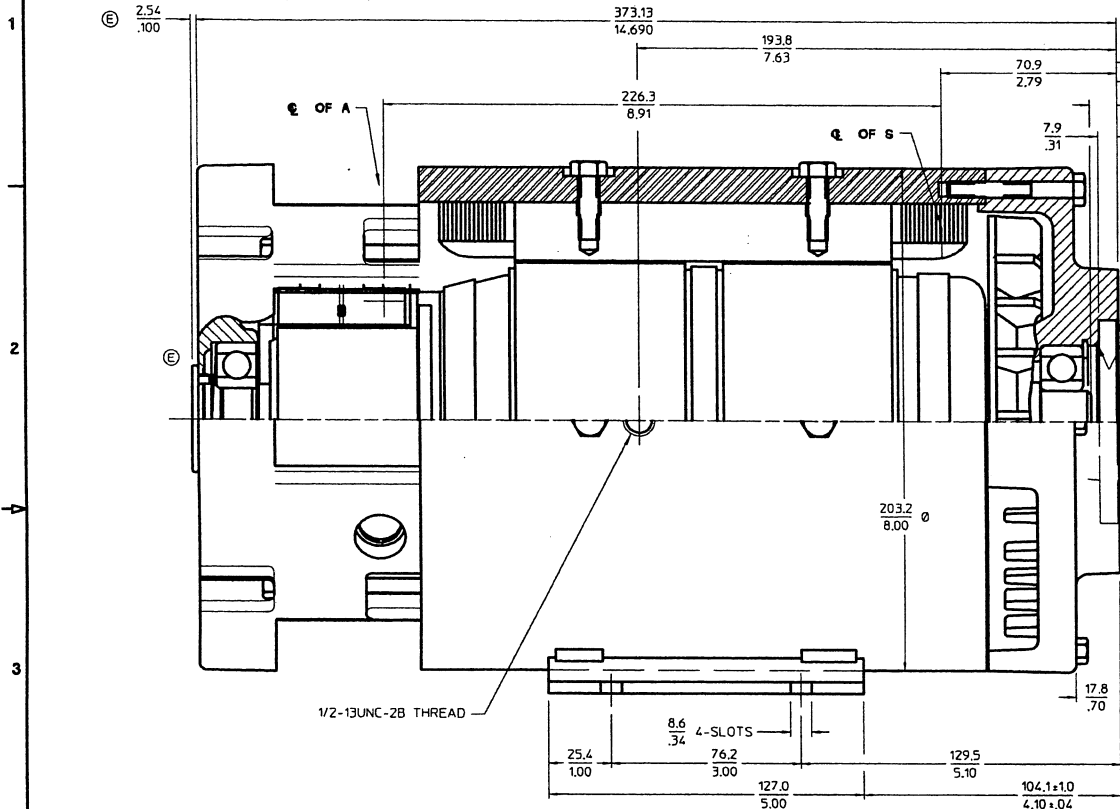


Notice - Advanced D.C. Motors, Inc. claims proprietary rights in the information disclosed on this drawing. It is issued in confidence for engineering information only and may not be used, in whole or in part, to manufacture anything whether or not shown hereon, reproduced or disclosed to anyone without direct written permission from Advanced D.C. Motors, Inc.

OUTLINE DIMENSIONS ARE NOMINAL UNLESS TOLERANCES ARE SPECIFIED

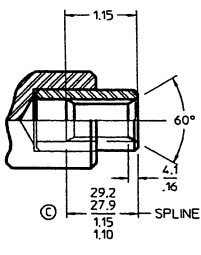
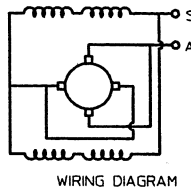


INTERNAL INVOLUTE SPLINE DATA
FLAT ROOT SIDE FIT (PER A.N.S.I. B92.1 CLASS 5)

- No OF TEETH ———— 11
- SPLINE PITCH ———— 16/32
- PRESSURE ANGLE ———— 30°
- BASE DIA ———— 15.120/1.5953 REF
- PITCH DIA ———— 17.462/1.6875 REF
- MAJOR DIA ———— 19.71/1.776
- FORM DIA ———— 19.15/1.754
- MINOR DIA ———— 16.02-16.15/1.631-.636
- CIRCULAR SPACE WIDTH
- MAX ACTUAL ———— 2.560/1.008
- MIN. EFFECTIVE ———— 2.494/1.0982
- MAX DIMENSION BETWEEN
- TWO PINS ———— 13.357/1.5259
- PIN DIA ———— 2.743/1.080

0.010 A
0.010 B

- ROTATION-C.C.W.D.E.
- CLASS 'H' INSULATION
- FINISH: FRAME-BLACK PAINT
- END HEADS-NATURAL ALUMINUM
- VENTILATED MOTOR WITH FAN
- DESIGNED WITH INTENT TO MEET U L SPEC# 583
- LATEST EDITION FOR TYPE 'E' & 'EE' INDUSTRIAL ELECTRIC MOTORS
- FOR TOTALLY ENCLOSED MOTOR USE KIT # EK-0005
- TEST TO CURVE: C-34



36 VOLT

MILLIMETER / INCHES OR MILLIMETER INCHES

PROJECTION THIRD ANGLE

Advanced D.C. Motors, Inc. Syracuse, N.Y.

Name: PUMP MOTOR OUTLINE

Scale: FULL

Drawn: TMC

Date: 11-08-92

Part No: 203-01

Zone	Rev	Was	By	Date	Material	Rev
F		CHGD LABEL AND NOTE, PCR-4372	GLH	01-30-04		
E		REV TO CONF TO DTL, PCR 3809	P.J.H.	02-16-01		
D		REV TO CONFORM TO DET. PCR321	EFC	02-04-95		
C-1	C	CORRECTED SPLINE DIMENSION	PCR#895	01-20-95		
C-1	B	ADDED OUST. ENCLOSED No. 279284	PCR#895	01-20-95		
D-1	A	REMOVED ADIC PART No. FROM LABEL	PCR#895	01-20-95		
		RELEASED TO PROD.	PCR#895	01-20-95		

LO-34

IND. XP